



DRAFT

**Phase II
Multi-Year School Organization
and Capital Works Plan
(St. John's Area)**

December 6, 2007

2007/08 - 2010/11

Executive Summary

On September 1, 2004 the Eastern School District was formed through the amalgamation of four former districts: Avalon East, Avalon West, Burin and Vista. The Eastern School District is now the largest school district in the province with approximately 43,000 students and 122 schools. The District employs approximately 4,000 teaching and support staff and maintains approximately 5.2 million square feet of floor space.

This Draft Phase II Multi-Year Capital Works and School Organization Plan reflects the Eastern School Board's efforts to address a number of challenges impacting St. John's area schools including declining enrolment, aging infrastructure and shifting demographics.

During fall 2006, feedback was sought from school councils and administrators from 38 St. John's metro area schools, representing approximately 16,000 students. Meetings were also held with city planners to gather data on active and potential housing developments. In addition, information was also collected on current and projected school enrolments, building capacity (assuming a K-6 class cap of 25), and the government-commissioned engineering reports on Bishops College and Holy Heart of Mary High School were also reviewed.

Overall, student enrolment in the metro area is decreasing, especially in the center city. Growth areas for housing developments are away from the centre of the city where our large high schools are currently located and therefore, the buildings are not located where students live. St. John's also has some of the oldest schools in the Province, with the average age being 42 years.

The Board's draft plan focuses on balancing our high school populations, building new facilities, maintaining some capacity for future growth, and streamlining feeder systems wherever possible.

It should be noted that this plan was also developed within the current educational context and in the absence of the Department of Education's ISSP Pathways Review, Teacher Allocation Review and Intermediate Review which may potentially impact future capacity and programming.

The Draft Phase II Multi-Year Capital Works and School Organization Plan is intended to generate discussion among school councils, parents and members of the public in helping the Eastern School Board develop a long-term plan for St. John's area schools. Public consultations will begin in late January 2008 and members of the public will be invited to provide feedback on this draft document for the Board's consideration before any final decisions are made in spring 2008.

Summary of Recommendations

Recommended New School Construction

- Bishops College, St. John's
- Holy Heart of Mary High School, St. John's
- Larkhall Academy, St. John's
- St. Teresa's Elementary, St. John's

Recommended Renovations / Extensions

- Beachy Cove Elementary, Portugal Cove-St. Phillip's
- Beaconsfield Junior High, St. John's
- Mary Queen of Peace Elementary, St. John's
- Roncalli Elementary, St. John's
- Virginia Park Elementary, St. John's

Recommended School Closures

- Booth Memorial High School, St. John's
- I. J. Samson Junior High, St. John's
- Macpherson Elementary, St. John's

Bishops College Feeder System

Feeder System	Recommended Changes
<p>Bishops College (Level I-III)</p>	<p>Bishops College (Level I-III), St. John's</p> <ul style="list-style-type: none"> • New Recommendation: Bishops College, St. John's, will close and will be replaced with a new high school located in the west end of the city of St. John's. <p>Beaconsfield Junior High (7-9), St. John's</p> <ul style="list-style-type: none"> • New Recommendation: An extension to accommodate program and space needs of additional students will be required for Beaconsfield Junior High. • Students from Beaconsfield Junior High's catchment area will attend a new high school located in the west end of the city of St. John's. • I. J. Samson Junior High's catchment area will be rezoned for students to attend Beaconsfield Junior High and then proceed to a new high school located in the west end of the city of St. John's. <p>Hazelwood Elementary (K-6), St. John's</p> <ul style="list-style-type: none"> • Students from Hazelwood Elementary feed to Beaconsfield Junior High and on to a new high school located in the west end of the city of St. John's.

Bishops College Feeder System (Cont'd)

Feeder System	Recommended Changes
Bishops College (Level I-III)	St. Matthew's Elementary (K-6), St. John's <ul style="list-style-type: none">• Students from St. Matthew's Elementary feed to Beaconsfield Junior High and on to a new high school located in the west end of the city of St. John's.

Booth Memorial High School Feeder System

Feeder System	Recommended Changes
<p>Booth Memorial High (Level I-III)</p>	<p>Booth Memorial High School (Level I-III), St. John's</p> <ul style="list-style-type: none"> • Current Board Motion: Booth Memorial High School, St. John's, will close when an extension and necessary renovations are completed to accommodate program and space needs of additional students at Bishops College, but not earlier than June 2009 (Revised until June 2010). • New Recommendation: Booth Memorial High School, St. John's, will close, but not earlier than June 2010. Booth Memorial High School's catchment area will be rezoned for students from Holy Cross Junior High to attend the new Holy Heart of Mary High School and students from I. J. Samson Junior High will be rezoned to attend the new high school located in the west end of the city of St. John's. <p>Holy Cross Junior High (7-9), St. John's</p> <ul style="list-style-type: none"> • Holy Cross Junior High's catchment area will be rezoned for students to attend the new Holy Heart of Mary High School.

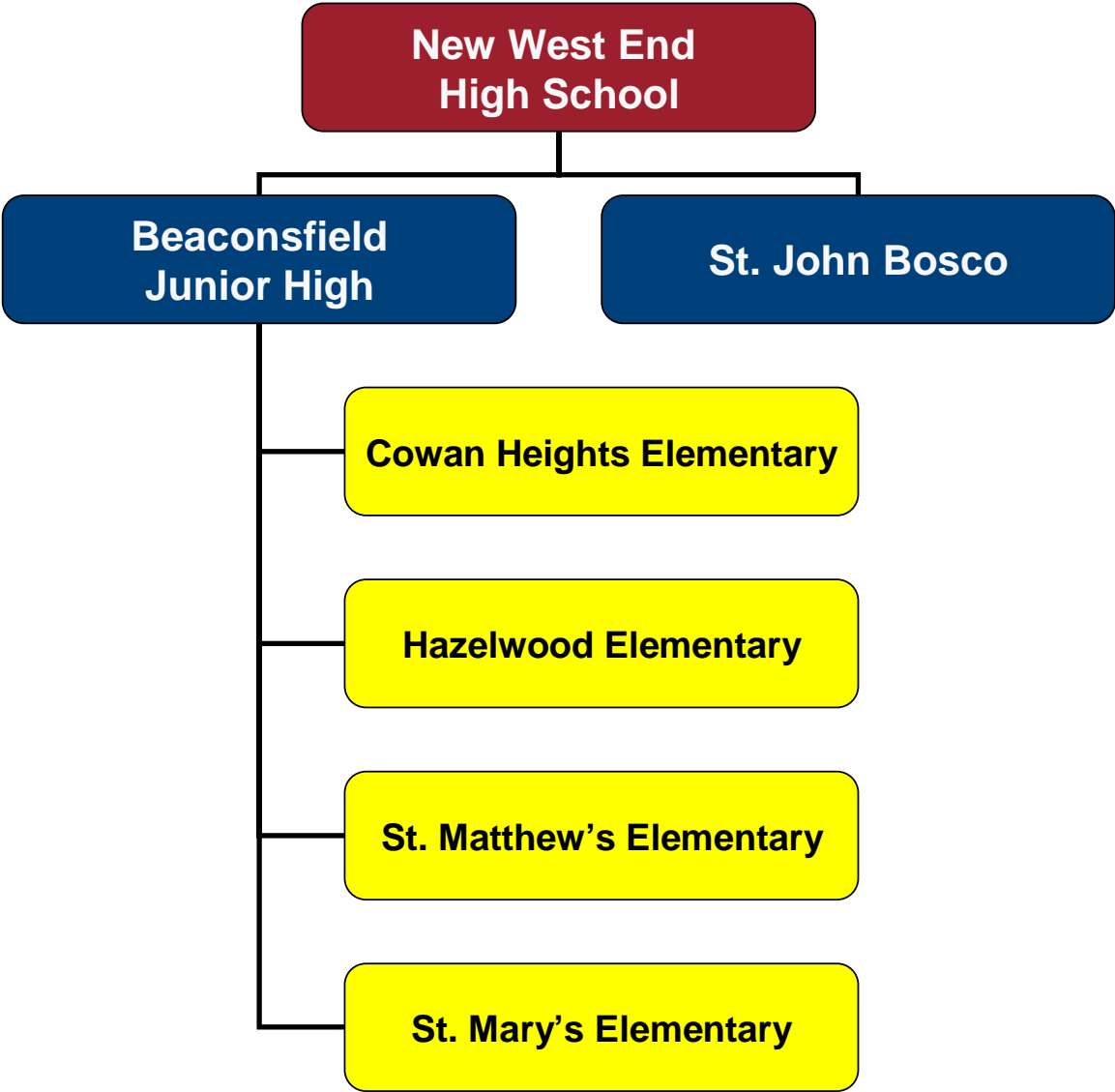
Booth Memorial High School Feeder System (Cont'd)

Feeder System	Recommended Changes
<p>Booth Memorial High (Level I-III)</p>	<p>I. J. Samson Junior High (7-9), St. John's</p> <ul style="list-style-type: none"> • Current Board Motion: I. J. Samson Junior High, St. John's, will close when an extension and necessary renovations are completed to accommodate program and space needs of additional students at Bishops College, but not earlier than June 2009 (Revised June 2010). • New Recommendation: I. J. Samson Junior High, St. John's, will close, but not earlier than June 2010. I. J. Samson Junior High's catchment area will be rezoned for students to attend Beaconsfield Junior High and on to a new high school located in the west end of the city of St. John's. <p>Bishop Abraham Elementary (K-6), St. John's</p> <ul style="list-style-type: none"> • New Recommendation: Effective September 2009, Macpherson Elementary will close and as a result Macpherson Elementary's catchment area will be rezoned for students to attend Bishop Abraham Elementary. • Students from Bishop Abraham Elementary will feed to Holy Cross Junior High and then proceed to the new Holy Heart of Mary High School.

Booth Memorial High School Feeder System (Cont'd)

Feeder System	Recommended Changes
<p>Booth Memorial High (Level I-III)</p>	<p>Cowan Heights Elementary (K-6), St. John's</p> <ul style="list-style-type: none"> • Cowan Heights Elementary's catchment area will be rezoned for students to attend Beaconsfield Junior High and on to a new high school located in the west end of the city of St. John's. <p>Holy Cross Elementary (K-6), St. John's</p> <ul style="list-style-type: none"> • Students from Holy Cross Elementary feed to Holy Cross Junior High and then proceed to the new Holy Heart of Mary High School. <p>St. Mary's Elementary (K-6), St. John's</p> <ul style="list-style-type: none"> • Current Board Motion: Students from St. Mary's Elementary will feed to Holy Cross Junior High and then to Holy Heart of Mary High School. • New Recommendation: St. Mary's Elementary's catchment area will be rezoned for students to attend Beaconsfield Junior High and on to a new high school located in the west end of the city of St. John's.

Proposed West End Feeder System



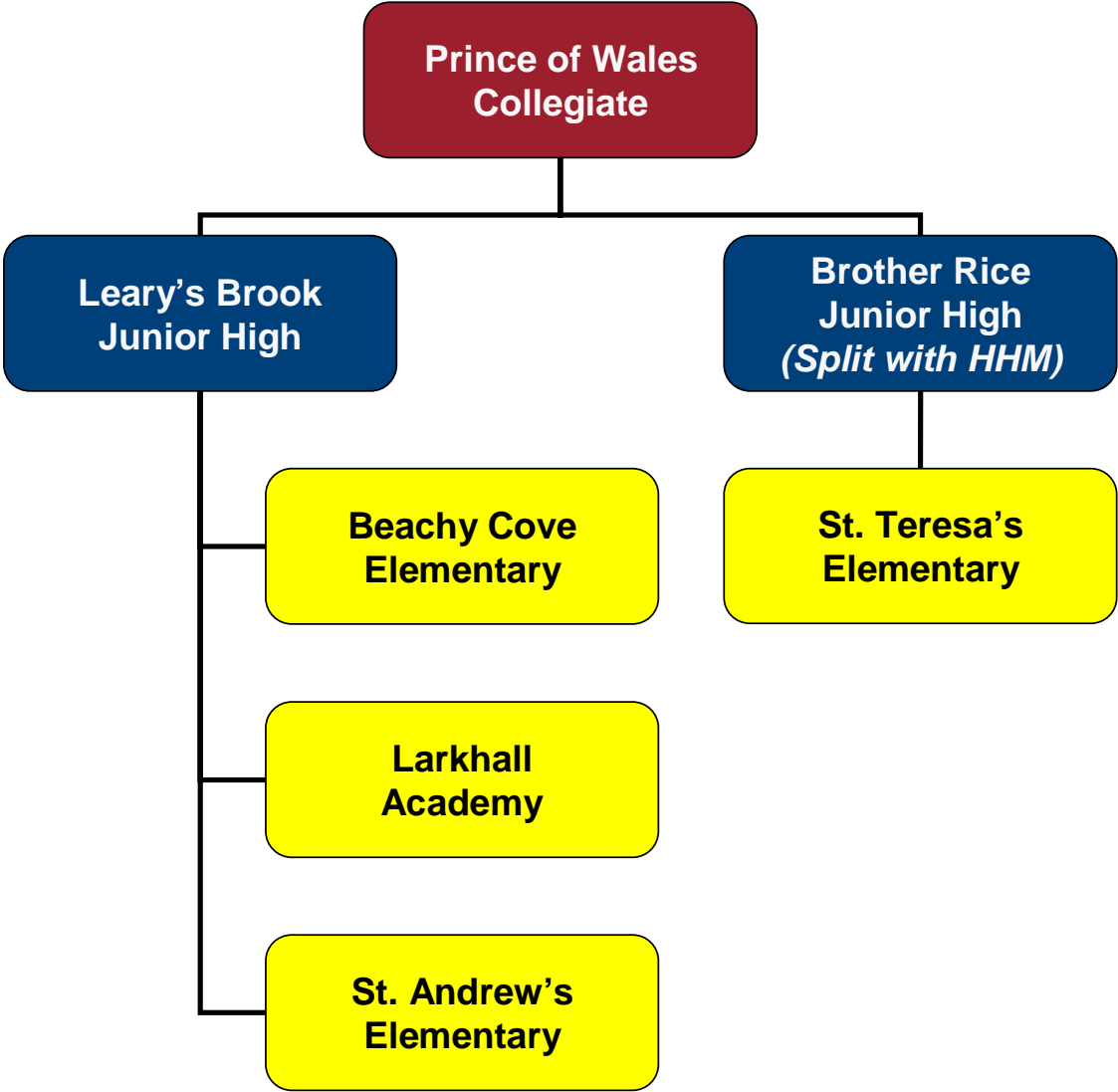
Prince of Wales Collegiate Feeder System

Feeder System	Recommended Changes
<p>Prince of Wales Collegiate (Level I-III)</p>	<p>Prince of Wales Collegiate (Level I-III), St. John's</p> <ul style="list-style-type: none"> • Status Quo <p>Brother Rice Junior High School (7-9), St. John's</p> <ul style="list-style-type: none"> • Students from St. Teresa's Elementary, feed to Brother Rice Junior High and on to Prince of Wales Collegiate. <p>Leary's Brook Junior High (7-9), St. John's</p> <ul style="list-style-type: none"> • Status Quo <p>Beachy Cove Elementary (K-6), Portugal Cove-St. Phillip's</p> <ul style="list-style-type: none"> • Current Board Motion (Completed): The Eastern School Board secure funds from Government to construct an extension on Beachy Cove Elementary, Portugal Cove-St. Phillip's. • New Recommendation: A second extension to accommodate program and space needs will be required for Beachy Cove Elementary, Portugal Cove-St. Phillip's.

Prince of Wales Collegiate Feeder System (Cont'd)

Feeder System	Recommended Changes
<p>Prince of Wales Collegiate (Level I-III)</p>	<p>Larkhall Academy (K-6), St. John's</p> <ul style="list-style-type: none"> • Current Board Motion: The Eastern School Board secure funds from Government to renovate Larkhall Academy, St. John's, to maintain a K-6 configuration. • New Recommendation: Larkhall Academy, St. John's, will close and will be replaced with a new facility. <p>St. Andrew's Elementary (K-6), St. John's</p> <ul style="list-style-type: none"> • Status Quo <p>St. Teresa's Elementary (K-6), St. John's</p> <ul style="list-style-type: none"> • Current Board Motion: The Eastern School Board secure funds from Government to replace St. Teresa's Elementary, St. John's, with a new facility. • Students from St. Teresa's Elementary feed to Brother Rice Junior High and on to Prince of Wales Collegiate.

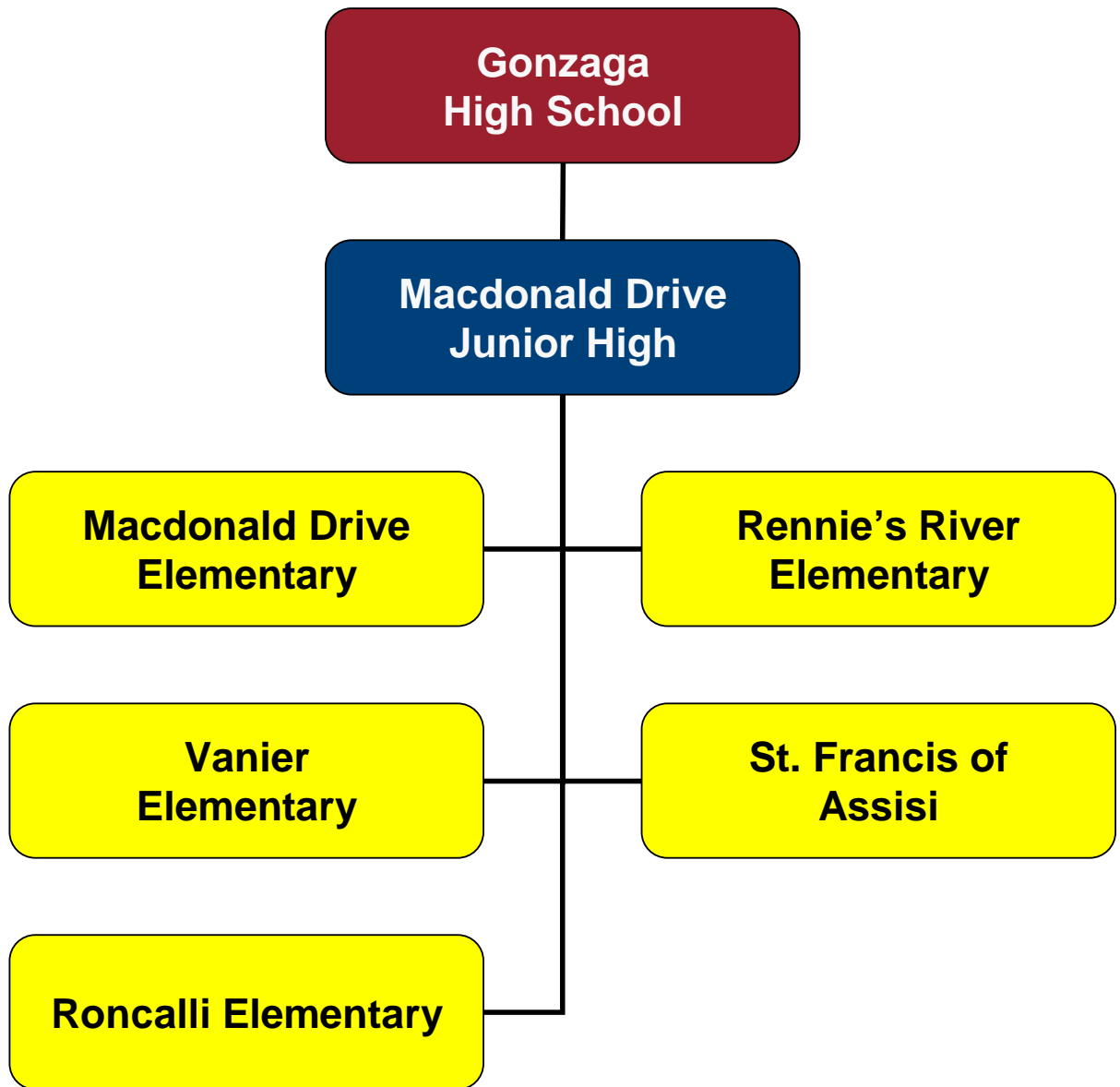
Proposed Prince of Wales Collegiate Feeder System



Gonzaga High School Feeder System

Feeder System	Recommended Changes
<p>Gonzaga High School (Level I-III)</p>	<p>Gonzaga High School (Level I-III), St. John's</p> <ul style="list-style-type: none"> • Status Quo <p>Macdonald Drive Junior High (7-9), St. John's</p> <ul style="list-style-type: none"> • New Recommendation: Effective September 2008, Roncalli Elementary, St. John's, will become part of the Gonzaga High School feeder system. Students from Roncalli Elementary will feed to Macdonald Drive Junior High and on to Gonzaga High School. <p>Macdonald Drive Elementary (K-6), St. John's</p> <ul style="list-style-type: none"> • Status Quo <p>Rennie's River Elementary (K-6), St. John's</p> <ul style="list-style-type: none"> • Status Quo <p>St. Francis of Assisi Elementary (K-6), Outer Cove</p> <ul style="list-style-type: none"> • Status Quo <p>Vanier Elementary (K-6), St. John's</p> <ul style="list-style-type: none"> • Status Quo

Proposed Gonzaga High School Feeder System



Holy Heart of Mary High School Feeder System

Feeder System	Recommended Changes
<p>Holy Heart of Mary High School (Level I-III)</p>	<p>Holy Heart of Mary High School (Level I-III), St. John's</p> <ul style="list-style-type: none"> • Current Board Motion: The Eastern School Board secure funds from Government to replace Holy Heart of Mary High School, St. John's, with a new facility. • New Recommendation: The Eastern School Board secure funds from Government to replace Holy Heart of Mary High School, St. John's, with a new school which includes an auditorium and enhanced music facilities. • New Recommendation: St. John Bosco will no longer serve as a feeder school for Holy Heart of Mary High School. Students from St. John Bosco will now feed to the new high school located in the west end of the city of St. John's. <p>Brother Rice Junior High (7-9), St. John's</p> <ul style="list-style-type: none"> • New Recommendation: Macpherson Elementary will no longer serve as a feeder school for Brother Rice Junior High. Macpherson Elementary's catchment area will be rezoned for students to attend Bishop Abraham Elementary. Students from Bishop Abraham will feed to Holy Cross Junior High and on to the new Holy Heart of Mary High School.

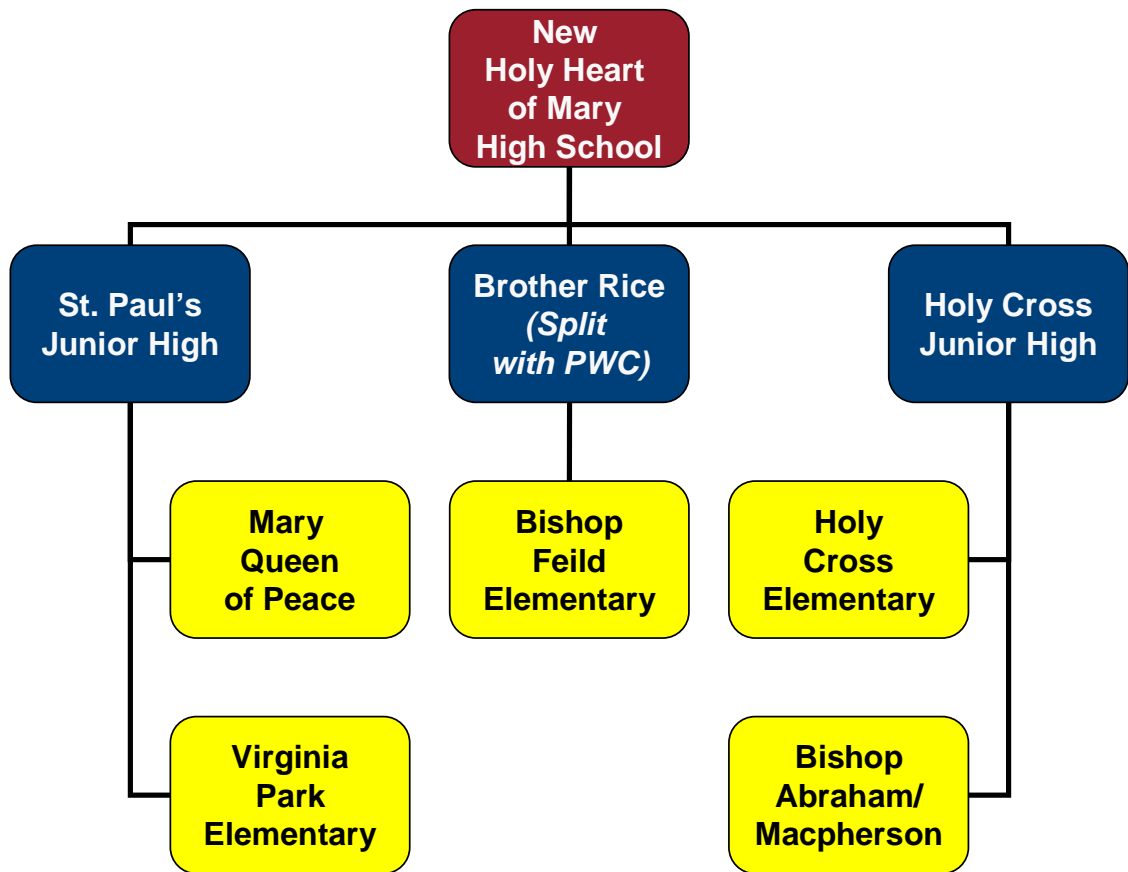
Holy Heart of Mary High School Feeder System (Cont'd)

Feeder System	Recommended Changes
<p>Holy Heart of Mary High School (Level I-III)</p>	<p>St. John Bosco (K-9), St. John's</p> <ul style="list-style-type: none"> • New Recommendation: St. John Bosco's catchment area will be rezoned for students to attend a new high school located in the west end of the city of St. John's. <p>St. Paul's Junior High (7-9), St. John's</p> <ul style="list-style-type: none"> • New Recommendation: Effective September 2008, Roncalli Elementary will no longer serve as a feeder school for St. Paul's Junior High. Students from Roncalli Elementary will now feed to Macdonald Drive Junior High and on to Gonzaga High School. <p>Bishop Feild Elementary (K-6), St. John's</p> <ul style="list-style-type: none"> • Status Quo <p>Macpherson Elementary (K-6), St. John's</p> <ul style="list-style-type: none"> • New Recommendation: Macpherson Elementary is recommended to close effective September 2009. <p>Macpherson Elementary's catchment area will be rezoned for students to attend Bishop Abraham Elementary. Students from Bishop Abraham will feed to Holy Cross Junior High and on to the new Holy Heart of Mary High School.</p>

Holy Heart of Mary High School Feeder System (Cont'd)

Feeder System	Recommended Changes
<p>Holy Heart of Mary High School (Level I-III)</p>	<p>Mary Queen of Peace Elementary (K-6), St. John's</p> <ul style="list-style-type: none"> • New Recommendation: An extension to accommodate program and space needs of the class cap will be required for Mary Queen of Peace Elementary. <p>Roncalli Elementary (K-6), St. John's</p> <ul style="list-style-type: none"> • Current Board Motion. The Eastern School Board secure funds from Government to construct an extension on Roncalli Elementary, St. John's. • New Recommendation: The proposed extension for Roncalli Elementary will become part of a long term plan to replace the old section of the building. • New Recommendation: Effective September 2008, Roncalli Elementary will become part of the Gonzaga High School feeder system. Students from Roncalli Elementary will feed to Macdonald Drive Junior High and on to Gonzaga High School. <p>Virginia Park Elementary (K-6), St. John's</p> <ul style="list-style-type: none"> • Current Board Motion: The Eastern School Board secure funds from Government to renovate and extend Virginia Park Elementary, St. John's, to maintain a K-6 configuration.

Proposed Holy Heart of Mary High School Feeder System



Holy Trinity High School Feeder System

Feeder System	Recommended Changes
<p>Holy Trinity High School (7- Level III)</p>	<p>Holy Trinity High School (7-12), Torbay</p> <ul style="list-style-type: none"> • Status Quo <p>Cape St. Francis Elementary (K-6), Pouch Cove</p> <ul style="list-style-type: none"> • Status Quo <p>Holy Trinity Elementary (K-6), Torbay</p> <ul style="list-style-type: none"> • Current Board Motion: (Government Approved – In Progress) The Eastern School Board secure funds from Government to replace Holy Trinity Elementary, Torbay, with a new facility. <p>Area Recommendation: The Eastern School Board recognizes growth in the Northeast Avalon area with future consideration for additional facilities.</p>